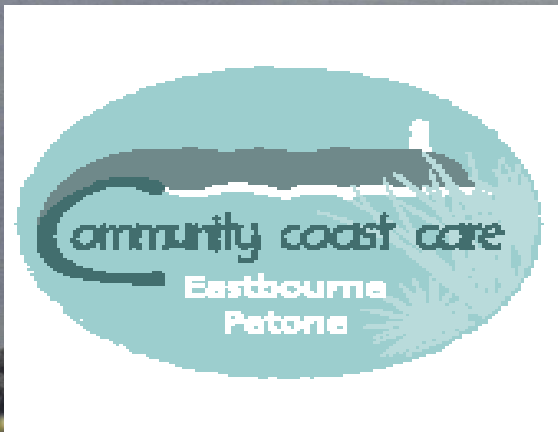


Petone Beach

Coastal Restoration Trust Conference 2024

Maketū Marae: Tui Lewis
The Friends of Petone Beach







Patrick St 2009

Heaphy, Charles 1820-1881 :Port Nicholson from the hills above Pitone in 1840 / drawn by Chas. Heaphy Esquire. London, Smith Elder & Co., [1845], Reference Number: PUBL-0009

Identifies Hutt River, Somes Island, Evans Bay and Wellington. Shows the huts of the first settlers at Petone. View from the western hills looking out towards the harbour entrance.



Somes Island

Evans Bay

Wellington



1930s

From Warwick Johnston's
History of Petone Beach



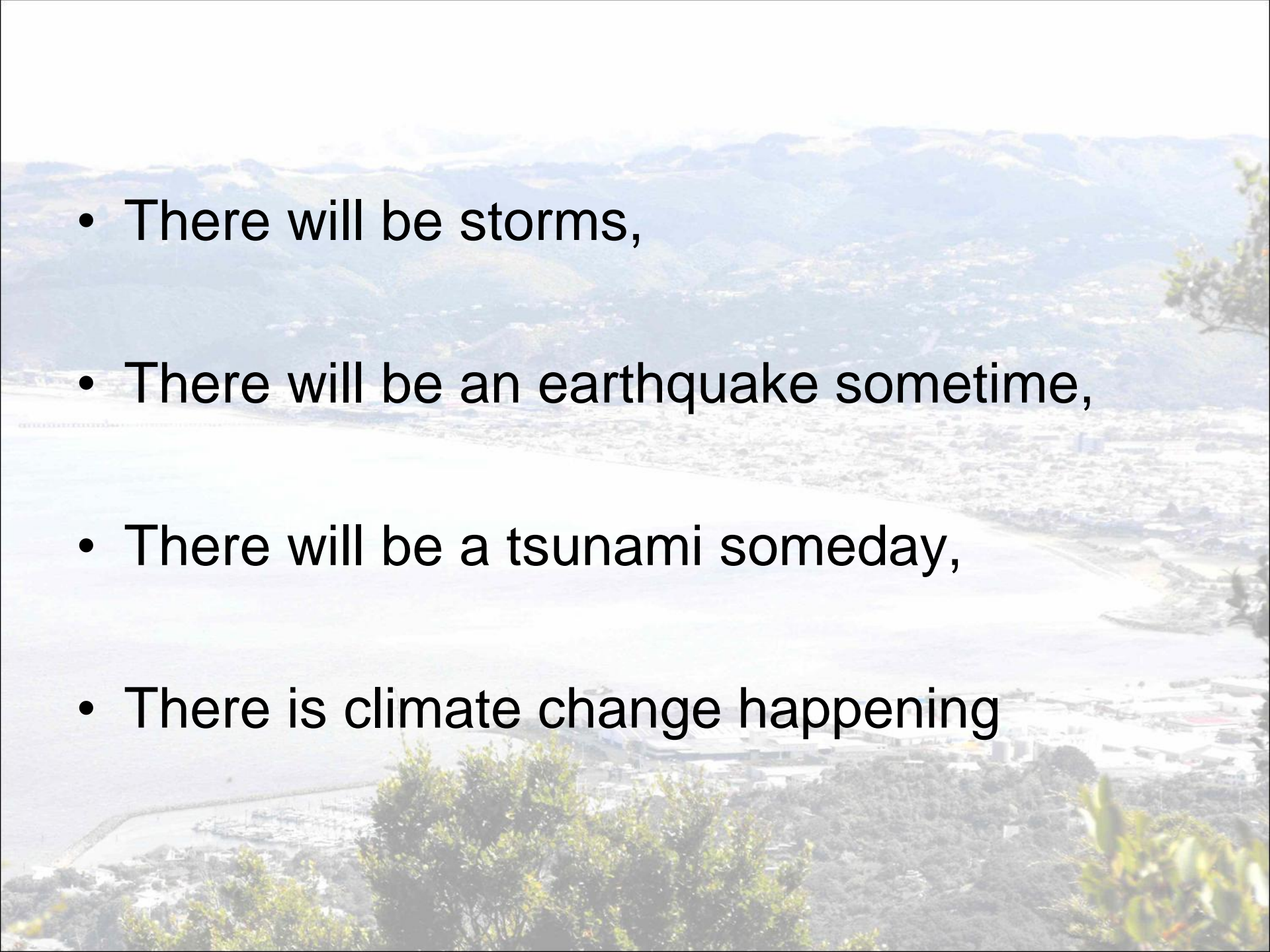
Effect of storm surges



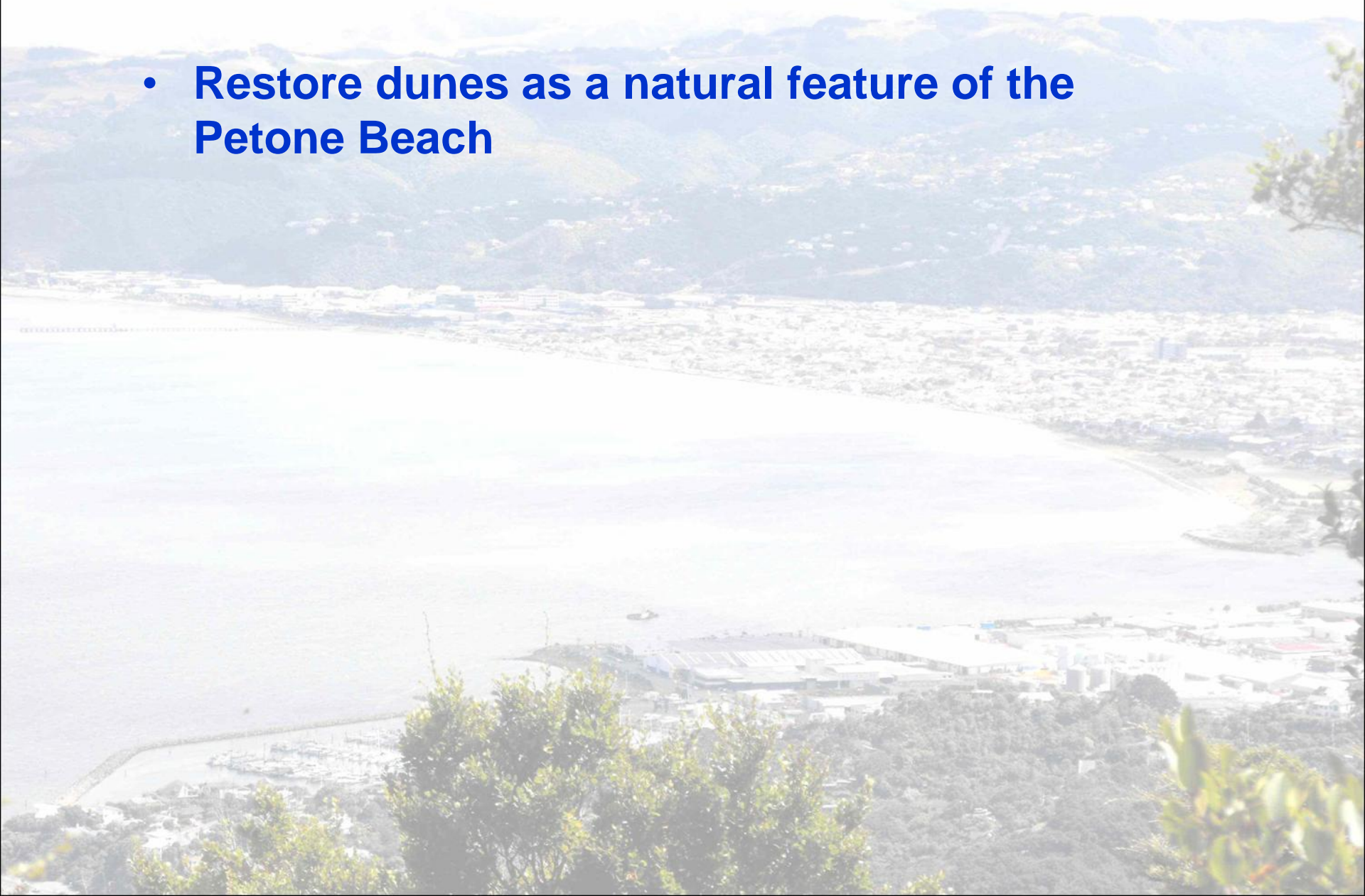
Museum Oct 2007

Wharf 25 July 2011



- 
- There will be storms,
 - There will be an earthquake sometime,
 - There will be a tsunami someday,
 - There is climate change happening

- The Petone Dune Restoration Project aims to:
- **Restore dunes as a natural feature of the Petone Beach**



- The Petone Dune Restoration Project aims to:

- **Restore dunes as a natural feature of the Petone Beach**

For:

- **Mitigation against potential rising sea level,**
- **Minimising storm surge damage,**

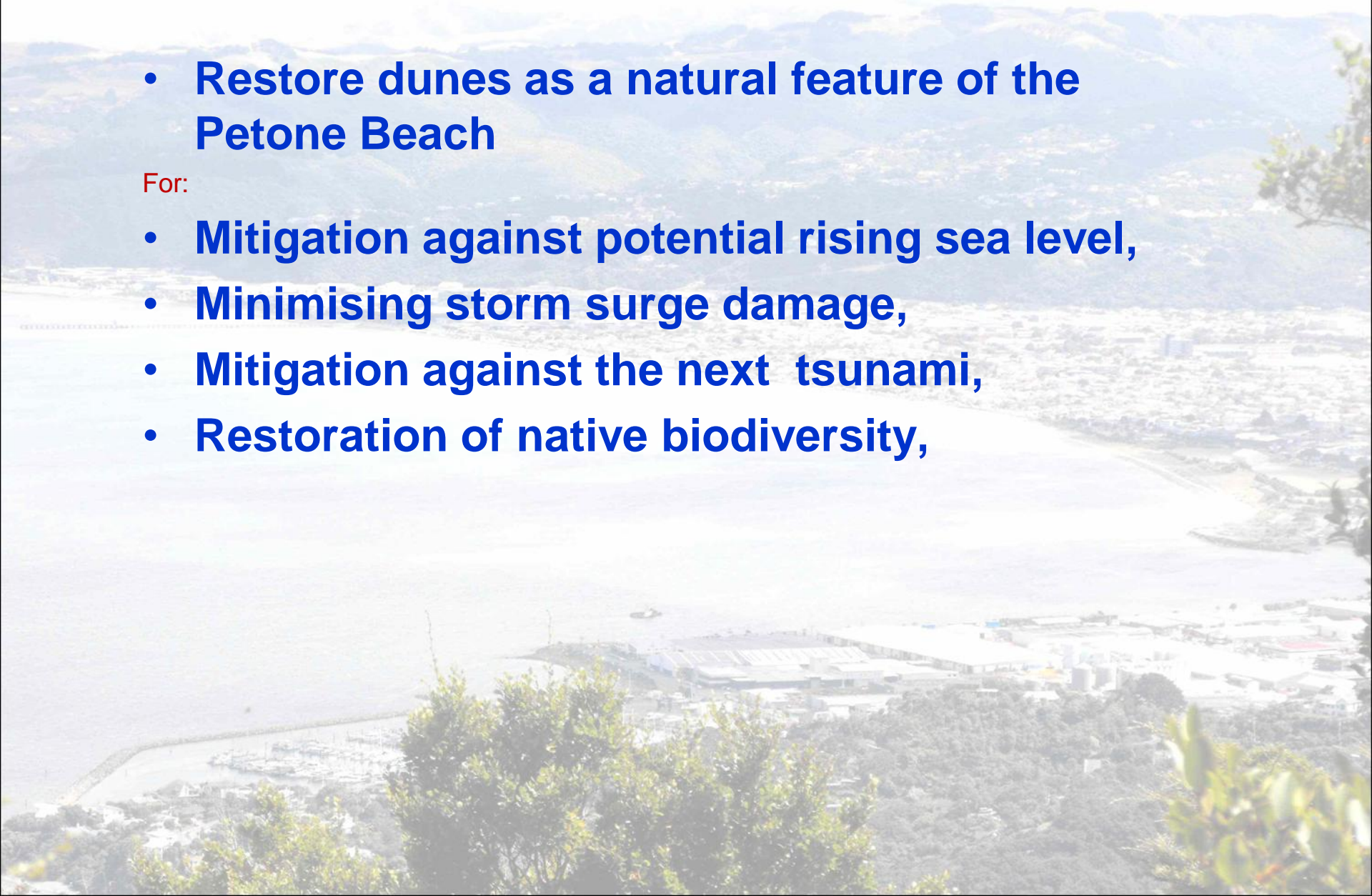


- The Petone Dune Restoration Project aims to:

- **Restore dunes as a natural feature of the Petone Beach**

For:

- **Mitigation against potential rising sea level,**
- **Minimising storm surge damage,**
- **Mitigation against the next tsunami,**
- **Restoration of native biodiversity,**



- 
- The Petone Dune Restoration Project aims to:
 - **Restore dunes as a natural feature of the Petone Beach**

For:

- **Mitigation against potential rising sea level,**
- **Minimising storm surge damage,**
- **Mitigation against the next tsunami,**
- **Restoration of native biodiversity,**
- **Reduction in wind-blown sand to streets and properties adjacent to the beach,**

By:

- **Planting native plants, mainly pingao and spinifex and by removing weeds and marram.**

- What has this project done:



Early planting

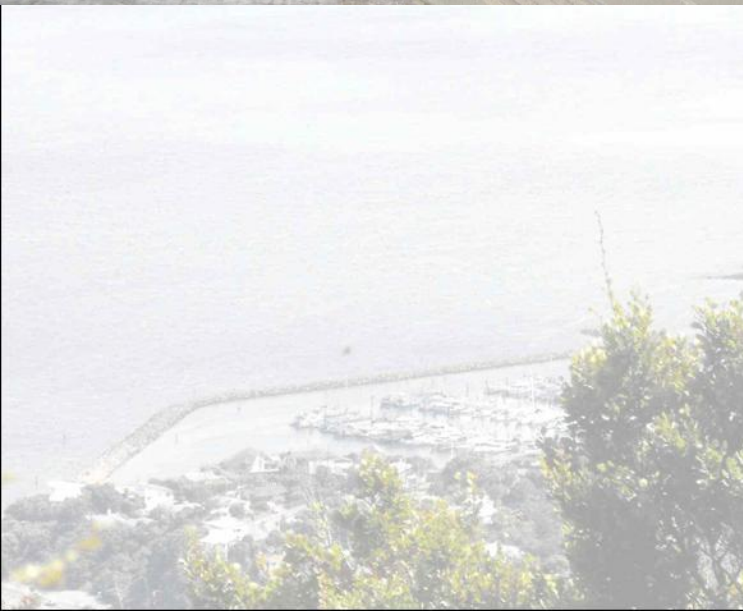
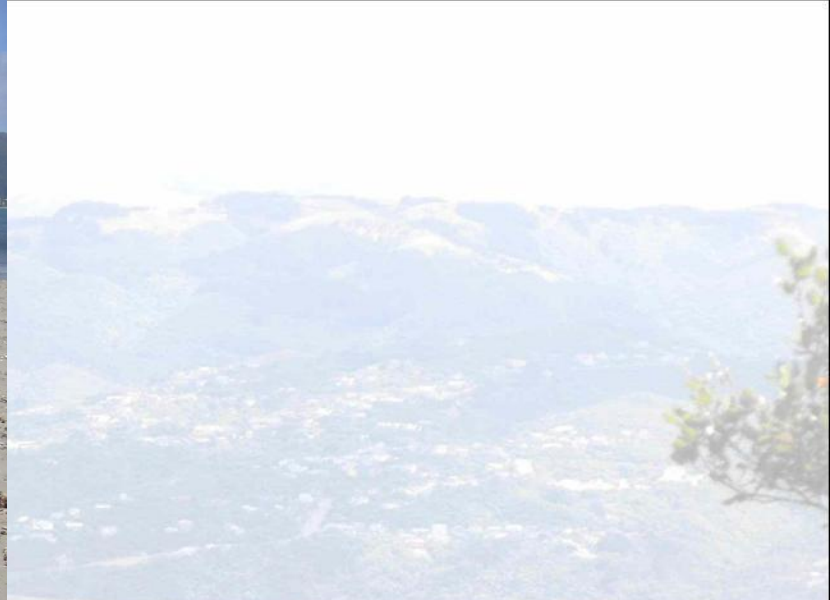
BBQ area, Richmond St
Pingao planted 2004

November 2006





BBQ area, November 2006



Posts

BBQ area, January 2010



BBQ area, November 2006



February 2013

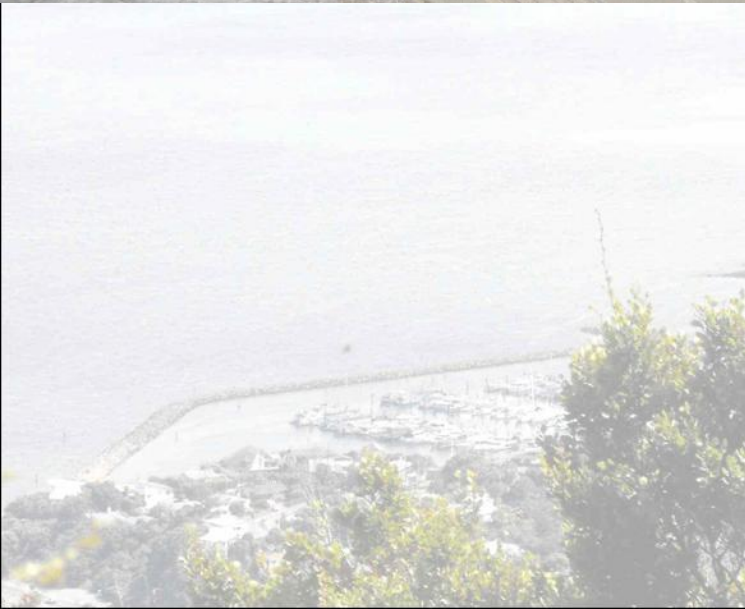


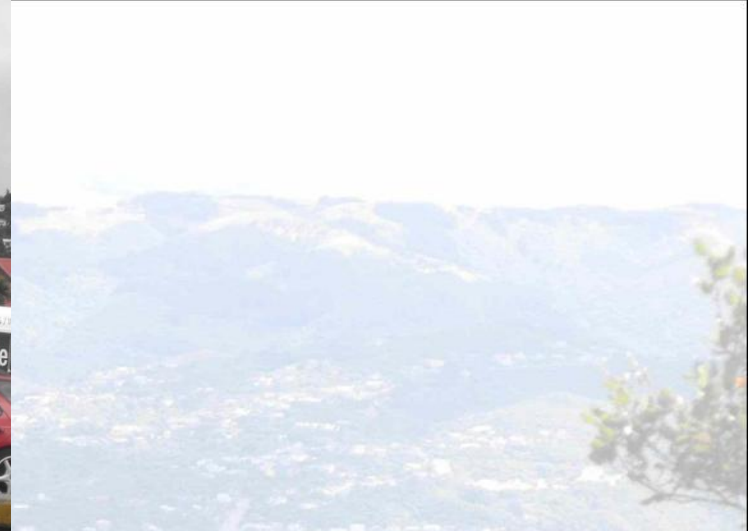


BBQ area, November 2006



November 2023





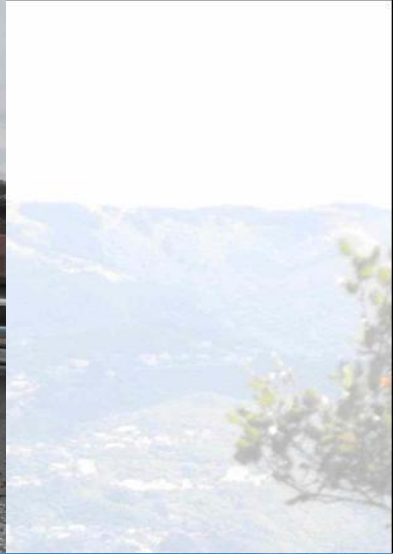
Beach St, February 2009
First Spinifex planted
September 2008

More planted spring 2009
View at February 2013



Beach St, February 2009
First Spinifex planted
September 2008

November 2023



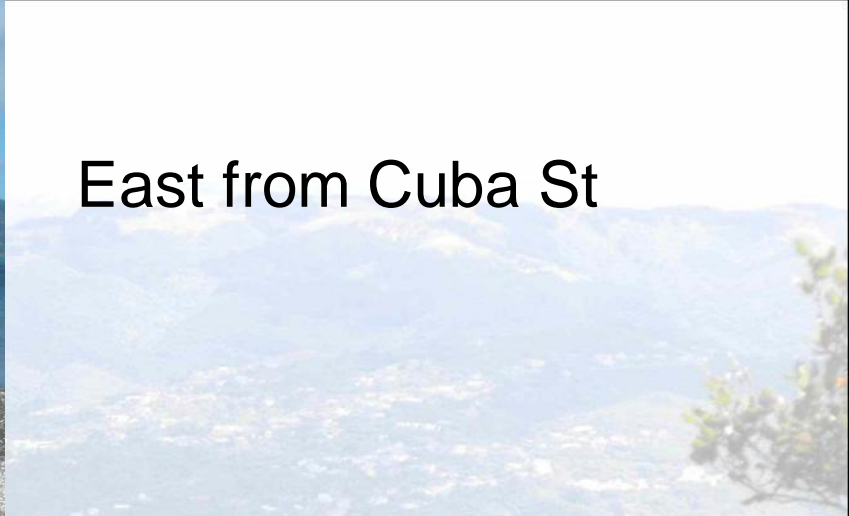
Patrick St
2009



2018



East from Cuba St



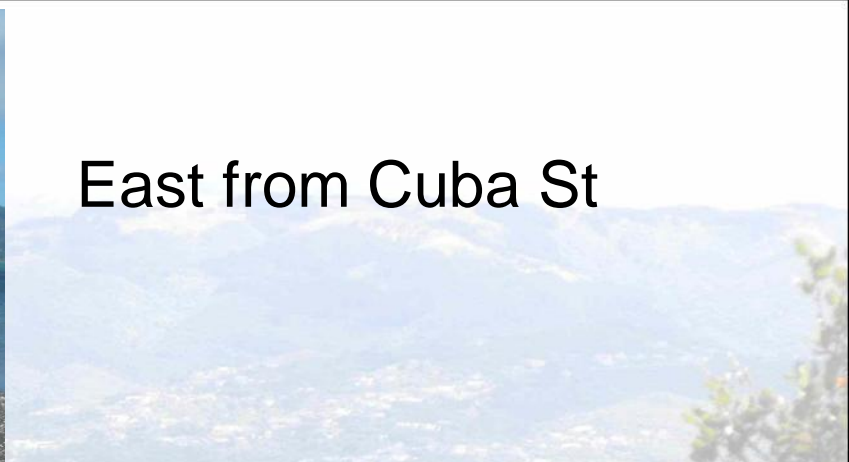
October 2009 -

March 2010





East from Cuba St



October 2009 -

November 2023



Tory St



2 February 2013



1 July 2013



28 August 2013

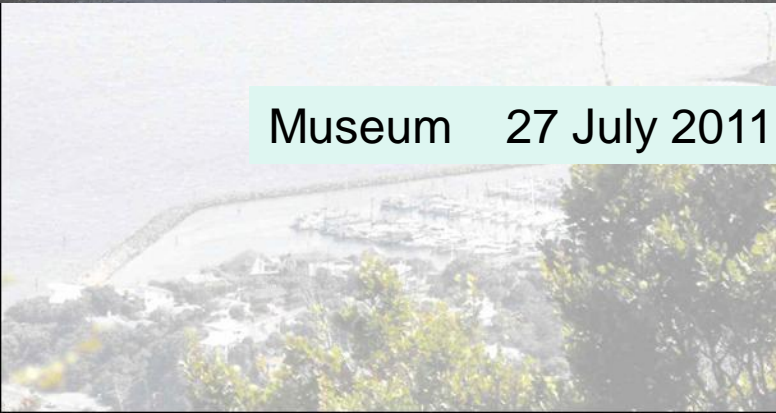


23 November 2013

Effect of storm surges



Museum Oct 2007



Museum 27 July 2011



Effect of storm surges



Museum Oct 2007



Museum February 2013



Effect of storm surges



Museum Oct 2007



November 2023



Restoring native biodiversity:

East from the wharf
2007 -2010

Back dune planting 2007





East from the wharf
June 2009



Infilling, June 2010



February 2013



November 2023

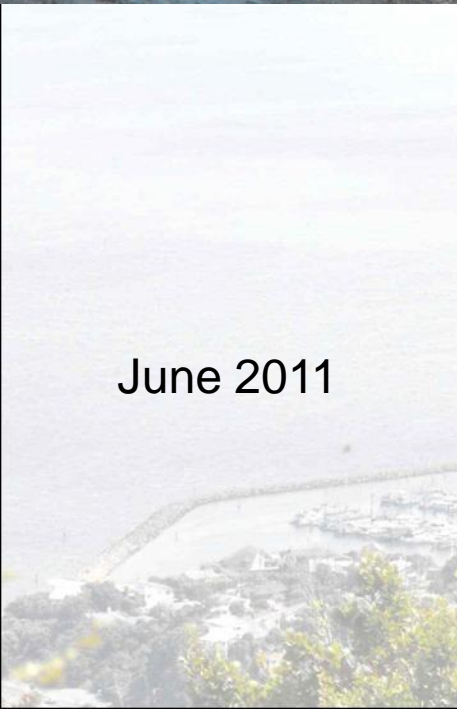
An aerial photograph of a coastal city and bay. The city is built on a hillside overlooking a large body of water. In the background, there are rolling hills and mountains under a clear sky. The foreground shows some green foliage.

Challenges for the future:

Maintaining the dunes relatively free of weeds.

Controlling potential over-development :e.g. Trails on the sand.

Managing stormwater drains to the sea.



June 2011



